

**WHEEL LOADER | 411/417**

**JCB**



**STAGE V**

**ENGINE POWER**  
**97–112kW**

**FULL TURN TIPPING LOAD**  
**5,451–6,042kg**

**SHOVEL SIZE**  
**1.4–1.6m<sup>3</sup>**

# FULLY PRODUCTIVE

Time is of the essence on any worksite and the 411 and 417 are designed to provide the fastest cycle times in the business.



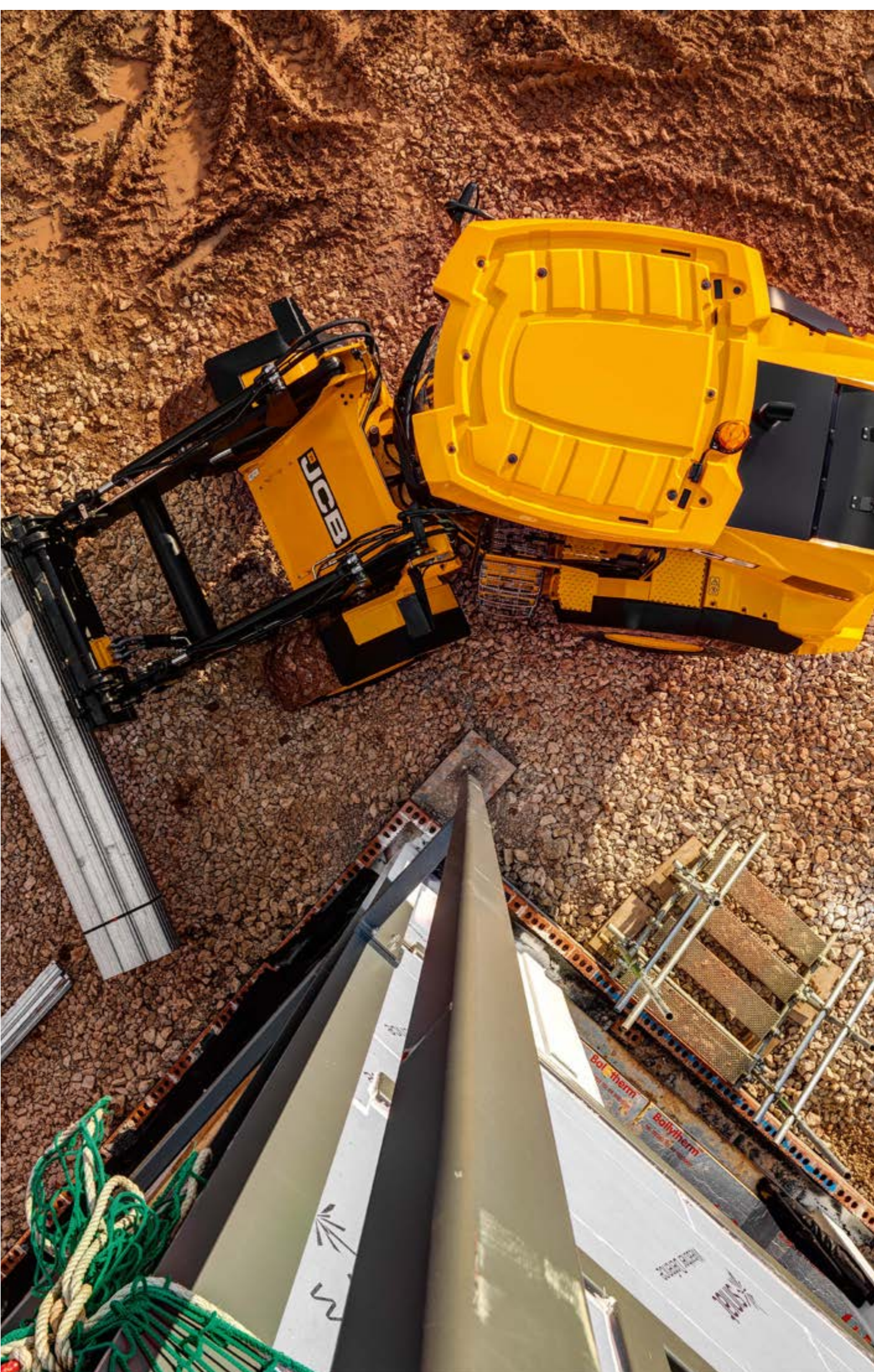
## GREATER VERSATILITY

3 or 4-spool hydraulics provide extra versatility, enabling the use of a wide range of attachments.



# FULLY POWERED

Our cutting-edge, Stage V DIESELMAX engine takes power and efficiency to another level, combining efficient driveline and low fuel consumption.



## EFFICIENT DESIGN

Auto engine shutdown feature saves fuel by switching off the engine when left idling.

# FULLY IN COMMAND

Our CommandPlus cab features the latest in ergonomic design, providing optimal control layout, comfort and visibility, enabling even greater operator productivity.



## FEEL THE DIFFERENCE

Fully seat-mounted controls that move with the seat's suspension, make controlling the loader easy.



# FULLY PROTECTED

Superb visibility helps protect operators, bystanders and machine alike at all times. The 411 and 417 also have non-slip surfaces and excellent air filtration.



## SAFELY DOES IT

Our rear-view camera displays an unobstructed rearward view on the in-cab colour monitor.

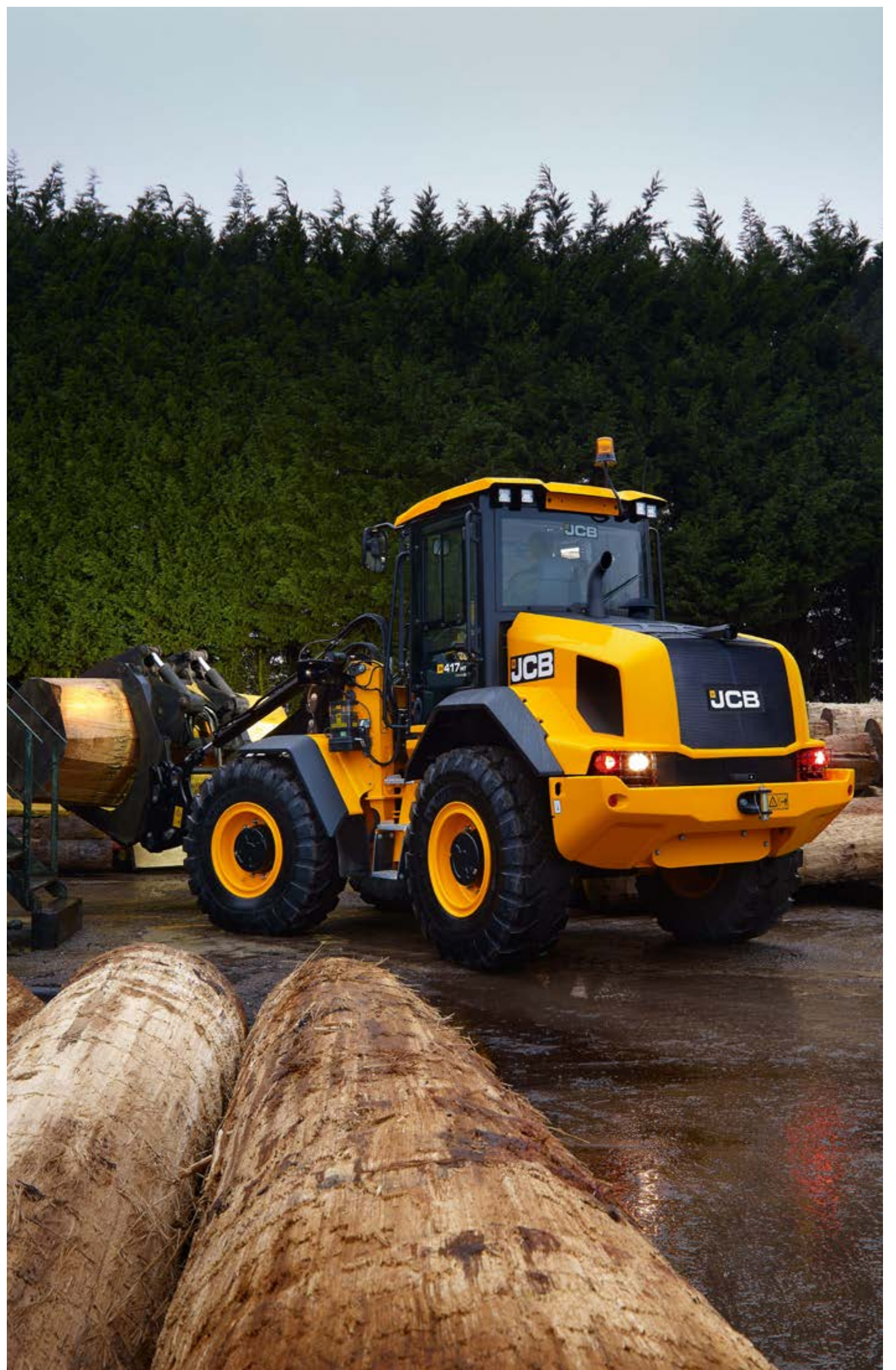
## FULLY SERVICEABLE

A one-piece bonnet with a large opening and easy ground level access to key components, both help to maximise your uptime.



## FULLY SUPPORTED

LiveLink telematics and world-class aftercare, ensure your machine is performing to its full potential.



# WHEEL LOADER | 411/417



## SPECIFICATION

MODEL		411	417
Standard shovel size	m <sup>3</sup>	1.4	1.6
FTTL	kg	5,451	6,042
Engine Power	hp (kW)	109 (81)	130 (97)
Transmission (powershift)		4 speed	4-speed
Travel speed	kph	40	40
Operating weight	kg	8,722	9,602



FITTED AS STANDARD

HEALTH ALERTS ACTIONS

34

Actions

TAKE ACTION



FST - 4220

001789456

3 Health

2 Failed check

HEALTH ALERTS

Issues raised: Today



P226900 - Water in fuel detected

08:03:50

## STANDARD FEATURES

- CommandPlus cab
- Air suspension seat
- High spec display with integrated rear view camera
- Joystick loader control
- Air-conditioning
- Auto engine shutdown
- Widecore cooling package
- 4-speed powershift transmission - 40kph
- 1 auxiliary service
- LiveLink telematics



# THE JCB 411 AND 417 WHEEL LOADERS

[FIND OUT MORE](#)

[REQUEST A QUOTE](#)

 **JCB**

[www.jcb.com](http://www.jcb.com)

