

SPECIFICATION

EASY — IN A — HARD WORLD



TANDEM VIBRATORY ROLLERS | CT160 / CT260

Operating weight: 3770 – 5644lb (1.710 – 2.560kg) Engine power: 14.2 – 18.2kW (19.0 – 24.4hp) Drum width: 31 – 47in (800 – 1200mm)



EASY IN A HARD WORLD.

The new JCB CT160 and 260 tandem rollers have been designed to be easy to use, easy to be productive, easy to keep safe and secure and easy to service. The simple drum offset increases the efficiency and the chamfered drum edges create a smooth finish. They are also trailer towable for ease of transport.



POWER, PERFORMANCE, PRODUCTIVITY.

Both the CT160 and CT260 feature high centrifugal forces and static linear loads for the best compaction performance – dynamically or statically – on aggregates or asphalt.



EASY AND EFFICIENT.

The new JCB CT160 and 260 tandem rollers have been designed to be easy to use, easy to be productive, easy to keep safe and secure and easy to service.

EASY TO USE.

With a simple, intuitive control layout and superior operator comfort, our new tandem rollers make working not just easy but also a pleasure.



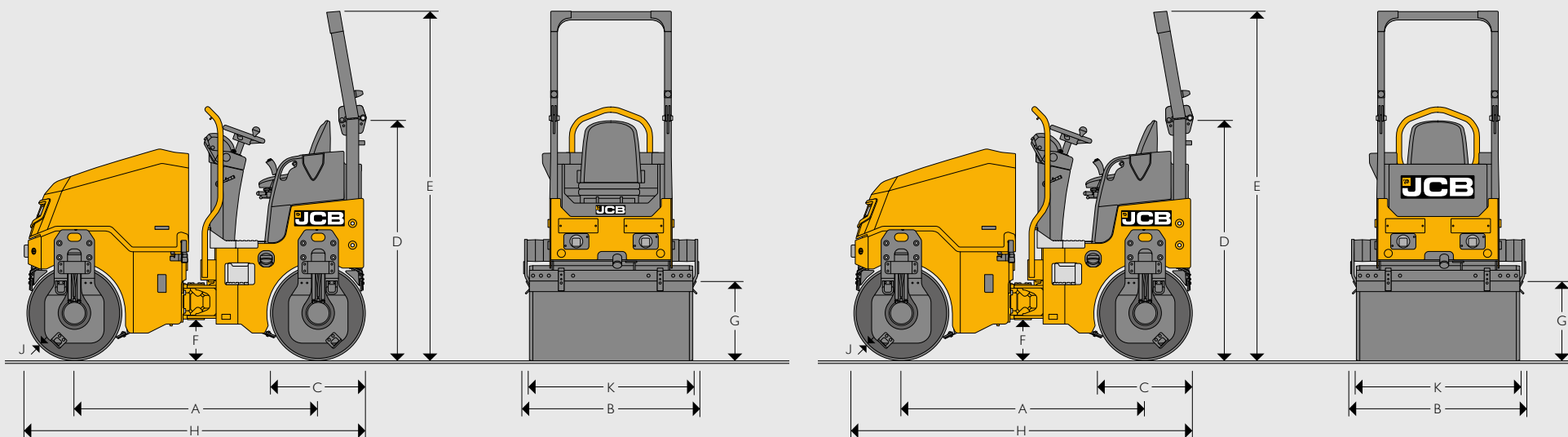
EASY TO SERVICE.

Easy access engine service points, longer service intervals and many zero maintenance parts, our new CT160 and 260 tandem rollers are easy to maintain.

SAFETY AND SECURITY.

With JCB's LiveLink telematics system as standard, plus many built-in safety features, the new CT160 and 260 tandem rollers give you complete peace of mind.

STATIC DIMENSIONS



STATIC DIMENSIONS

			CT160-80	CT160-100	CT260-100	CT260-120
A	Wheelbase	ft-in (mm)	5-11 (1560)	5-11 (1560)	5-9 (1790)	5-9 (1790)
B	Overall width	ft-in (mm)	3-1 (960)	3-6 (1090)	3-6 (1090)	4-2 (1295)
C	Drum diameter	ft-in (mm)	1-9 (580)	1-9 (580)	2-3 (700)	2-3 (700)
D	Height to top of seat	ft-in (mm)	5.5 (1680)	5.5 (1680)	5-8 (1755)	5-8 (1755)
E	Height to top of ROPS	ft-in (mm)	8-1 (2485)	8-1 (2485)	8-2 (2510)	8-2 (2510)
F	Ground clearance	ft-in (mm)	10 (255)	10 (255)	10.6 (270)	10.6 (270)
G	Curb clearance	ft-in (mm)	1-7 (510)	1-7 (510)	1-8 (560)	1-8 (560)
H	Total travel length	ft-in (mm)	7 (2140)	7 (2140)	8-2 (2490)	8-2 (2490)
J	Drum thickness	ft-in (mm)	0.5 (12)	0.5 (12)	0.5 (12)	0.5 (12)
K	Drum width	in (mm)	31 (800)	39 (1000)	39 (1000)	47 (1200)

OPERATING DATA		CT160-80		CT160-100		CT260-100		CT260-120	
Nominal weight	lb (kg)	3704 (1630)		3770 (1710)		5027 (2280)		5335 (2420)	
Operating weight (CECE)	lb (kg)	3770 (1710)		3946 (1790)		5335 (2420)		5644 (2560)	
Maximum operating weight	lb (kg)	3946 (1790)		4123 (1870)		5732 (2600)		6041 (2740)	
Operating weight front	lb (kg)	1764 (800)		1852 (840)		2624 (1190)		2778 (1260)	
Operating weight rear	lb (kg)	2006 (910)		2094 (950)		2712 (1230)		2866 (1300)	
Working width	in (mm)	31.5 (800)		39.4 (1000)		39.4 (1000)		47.2 (1200)	
Operating linear load	lb/in (kg/cm)	56 (10)	63.7 (11.4)	47 (8.4)	53.1 (9.5)	66.6 (11.9)	86.1 (12.3)	58.9 (10.5)	60.7 (10.9)
Exciter frequency	vpm (Hz)	3000 (50)	3960 (66)	3000 (50)	3960 (66)	3000 (50)	3960 (66)	3000 (50)	3960 (66)
Nominal amplitude	in (mm)	0.016 (0.41)		0.014 (0.35)		0.022 (0.56)		0.020 (0.51)	
Centrifugal force (each drum)	lbf (kN)	2452 (10.9)	4297 (19.1)	2452 (10.9)	4297 (19.1)	5310 (23.6)	9247 (41.1)	5310 (23.6)	9247 (41.1)
Max. Working speed	mph (km/h)	5.6 (9)		5.6 (9)		6.2 (10)		6.2 (10)	
Drum offset left / right - manual (option)	in (mm)	2.2 (56)		2.2 (56)		2.4 (60)		2.4 (60)	
Steering angle	degrees	±33		±33		±33		±33	
Oscillation angle	degrees	±8		±8		±8		±8	
Inner turn radius	in (mm)	85 (2160)		82.3 (2090)		97.4 (2475)		93.5 (2375)	
Gradeability with vibration up to	%	25		25		30		30	
Gradeability without vibration up to	%	35		35		40		40	

ENGINE		CT160 (All Models)		CT260 (All Models)	
Make		Kubota		Kubota	
Model		D1005-E4B-EU		D1703-M-DI-E4B	
Type		3 cylinder, water-cooled four-stroke diesel engine		3 cylinder, water-cooled four-stroke diesel engine	
Piston displacement	cm ³	1001		1647	
Performance	kW (hp)	14.2 (19.0)		18.2 (24.4)	
Operating speed	rpm	2550		2200	
Starting device		Electric motor		Electric motor	
Air cleaner		Dry cartridge + safety cartridge		Dry cartridge + safety cartridge	
Fuel filler		Cartridge		Cartridge	

PROPULSION
Hydrostatic with variable displacement pump and fixed displacement motors with direct drive to both drums = double drum drive.

EXCITER DRIVE
Electronically controlled hydrostatic direct drive on both drums for double vibration or single vibration front or rear, AVC (automatic vibration control).

EXCITER
Single-shaft circular exciter.

STEERING SYSTEM
Servo assisted, maintenance free centre articulation with oscillation facility.

SERVICE CAPACITIES			
	CT160 (All Models)	CT260 (All Models)	
Fuel tank capacity	gal (litres)	8.7 (33)	12.2 (46)
Sprinkler water tank capacity	gal (litres)	26.4 (100)	52.0 (197)

BRAKING SYSTEM
Service brake: Hydrostatic propulsion system.
Parking brake: Hydraulically-released brake on both drums (SAHR).

WATER SYSTEM
Pressurised sprinkling system, adjustable scrapers (two each drum), changeable nozzles, multiple water filtering.

ELECTRICAL SYSTEM		CT160 (All Models)	CT260 (All Models)
Electrical system voltage	V	12	12
Battery capacity	Ah	80	62
Alternator	A	60	70

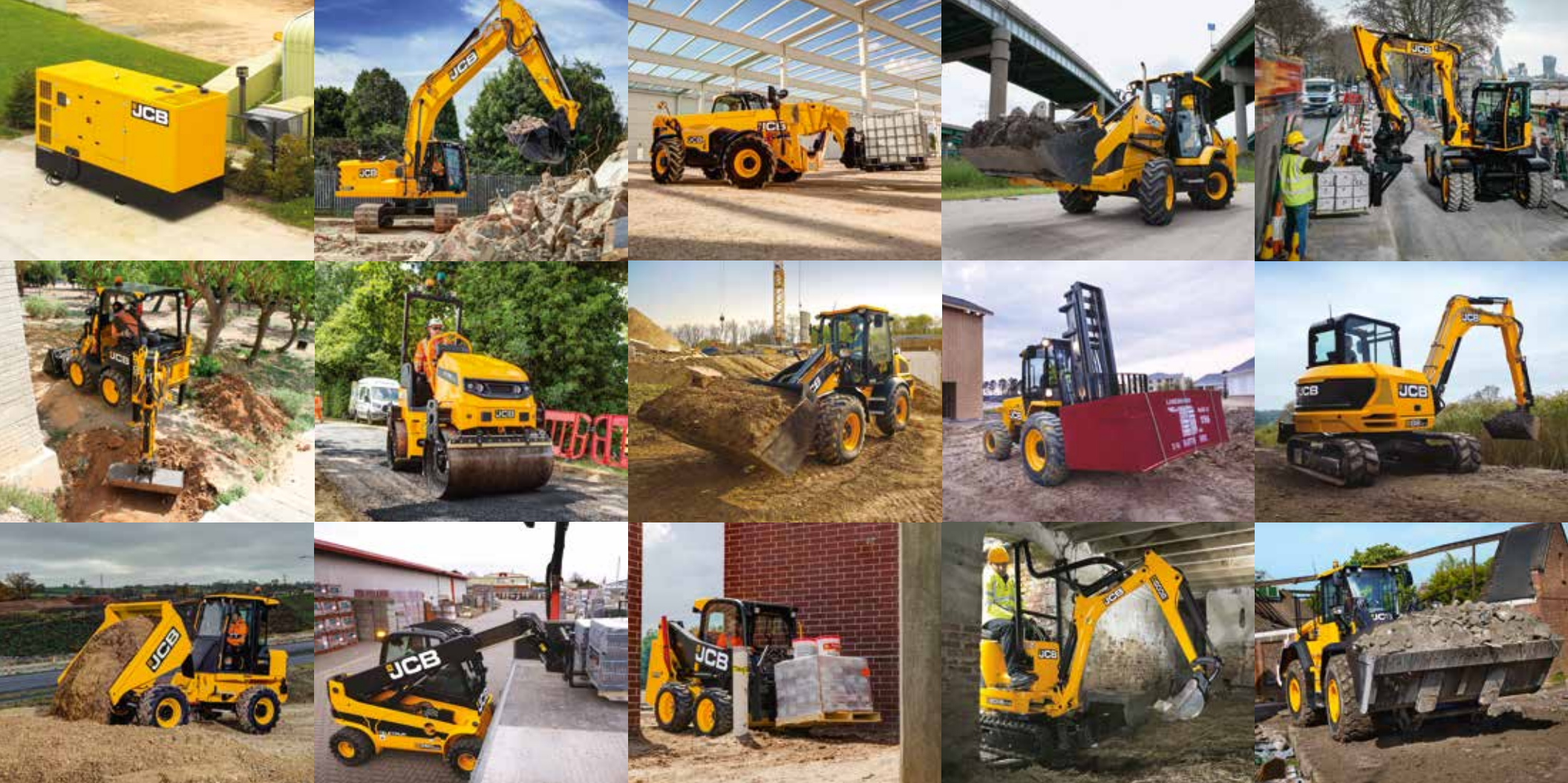
DRIVERS STAND / INSTRUMENTS
Fuel, battery charging current, sprinkler system, parking brake, hour meter, engine oil pressure, air filter condition, hydraulic oil level and temperature, water level indicator, cup holder, comfortable adjustable operator seat and safety belt, flashing amber beacon, fan guard, locking instrument panel cover, reverse alarm, foldable ROPS.

OPTIONS
Foldable ROPS Canopy, Road lights, Seat belt activated Green Beacon, White Noise Alarm, LED Work lights (not compatible with Canopy).









ONE COMPANY, OVER 300 MACHINES.

Your nearest JCB dealer

Tandem Vibratory Rollers CT160 / CT260

Operating weight: 3770 – 5644lb (1.710 – 2.560kg) Engine power: 14.2 – 18.2kW (19.0 – 24.4hp) Drum width: 31 – 47in (800 – 1200mm)

JCB North American – Headquarters

Savannah. 2000 Bamford Blvd., Savannah, Georgia, 31322 Tel: (912) 447-2000

Download the very latest information on this product range at www.jcb.com

JCB inc. All rights reserved. No part of this publication may be reproduced, stored in a retrieval system, or transmitted in any form or by any other means, electronic, mechanical, photocopying or otherwise, without prior permission from JCB inc. All references in this publication to operating weights, sizes, capacities and other performance measurements are provided for guidance only and may vary dependant upon the exact specification of machine. They should not therefore be relied upon in relation to suitability for a particular application. Guidance and advice should always be sought from your JCB Dealer. JCB reserves the right to change specifications without notice. Illustrations and specifications shown may include optional equipment and accessories. The JCB logo is a registered trademark of J C Bamford Excavators Ltd.

