



**TELESCOPIC WHEEL LOADER | TM110 AGRI**

Max engine power: 36kW (48hp) | Operating weight: 3,295kg | Lift capacity: 1,100kg | Lift Height: 3.5m



# NEW BEGINNING

A groundbreaking addition to the telescopic wheel loader range, the JCB TM110 redefines expectations for compact machines.

An innovative compact frame that prioritises performance, comfort and safety, JCB's new TM110 offers versatility for all tasks on the farm.

## NEW BEGINNING FOR POWER

The JCB TM110 offers a 36kW (48hp) engine providing you with increased performance at low engine speed.



## NEW BEGINNING FOR PERFORMANCE

The JCB TM110 has an outstanding lift capacity with a payload of 1,100 kg. Combined with a lift height of 3.5m, this allows for ultimate performance in a compact frame.

## NEW BEGINNING FOR COMFORT

The TM110 offers comfort in a compact package. The cab is fitted with a simple, yet intuitive control layout and the central driving position provides superb visibility.



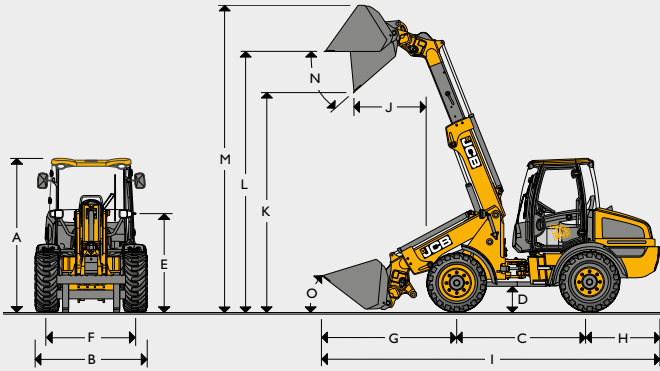
## NEW BEGINNING FOR DESIGN

Our most innovative compact design, the TM110 performs in the tightest of environments – meeting high standards of stability and comfort when completing tasks in confined areas.

## NEW BEGINNING FOR SAFETY

The JCB TM110 is designed for easy servicing, simplified cleaning and a virtually maintenance-free operation. The advanced stability features allow for secure lifting at full height.

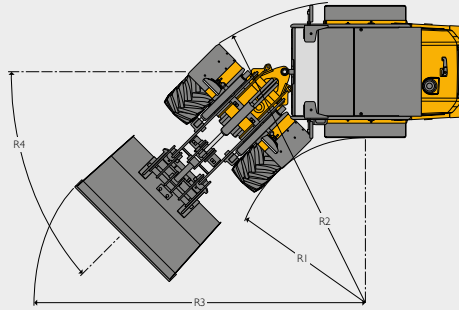
STATIC DIMENSIONS



STATIC DIMENSIONS

A	Overall height	mm	2172
B	Overall width (over tyres)	mm	1512
C	Wheelbase	mm	1900
D	Ground clearance	mm	320
E	Height to top of boom pivot	mm	1502
F	Wheel track	mm	1140
G	Axle to shovel toe plate	mm	1685
H	Axle to counterweight face	mm	1190
I	Total length	mm	4780
J	Dump reach	mm	921
K	Dump height	mm	3007
L	Load over height	mm	3455
M	Pin height	mm	4166
N	Maximum dump angle	degrees	32
O	Roll back at carry	degrees	58
	Total length to front of hitch	mm	3895
	Inside radius	mm	1317
	Outside radius (edge of tyre)	mm	2920
	Outside radius (over shovel)	mm	3354
	Articulation angle	degrees	44.2
	Operating weight	kg	3295
	Front axle weight	kg	1235
	Rear axle weight	kg	2060
	Tyres used for specification		Industrial
	Bucket used for specification		Wide Ag
	Hitch used for specification		Euro

TURNING CIRCLE



TURNING CIRCLE

Type		R1	R2
Industrial	mm	1317	2920
Agricultural	mm	1300	2890
Turf	mm	1300	2890
Shovel type		R3 mm	
0.55m³ agricultural	mm	3442	
		R4 (Articulation Angle)	
	degrees	44.2	

TRANSMISSION

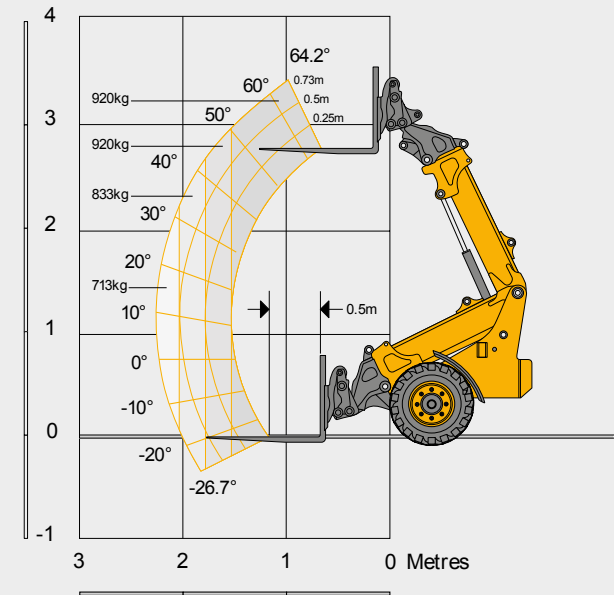
Type	ZF / Bosch-Rexroth				
Travel speed	kph	20		30	
		Forward	Reverse	Forward	Reverse
Hi range	kph	20	20	30	30
Low range	kph	8	8	12	12

ENGINE

Make	Perkins	
Model	403J-E17T	
Capacity	litres	1.663
Aspiration	Turbo charged	
Cylinders	3	
Max. gross power to ISO 3046	kW (hp) @ 2700 rpm	36 (48)
Max. torque	Nm @ 2200 rpm	167
Valves per cylinder	4	
Air cleaner	Donaldson FPG257502	
Fan drive type	Direct mount	
Emissions level	Stage V	

LOADER PERFORMANCE

Maximum lift capacity to full height with forks	kg	1100
Lift capacity at full reach	kg	713
Lift height	mm	3477
Maximum forward reach	mm	2240
Straight tipping load – forks with 500mm load centre	kg	1935
Full turn tipping load – forks with 500mm load centre	kg	1435
Full turn tipping load – forks calculated @ 80% load factor	kg	1100
Full turn tipping load – forks calculated @ 60% load factor	kg	825
Breakout force – tearout	kN	24.6



OPERATOR ENCLOSURE

Type	Operating weight kg	Forks	
		STL kg	FTTL kg
Canopy	0	1400.9	860.9
Cab	+88	1460	920

**LOADER HYDRAULICS**

Pump type		Gear
Pump I max. flow	l/min	53.2
Pump I max. pressure	bar	230
Max. auxiliary flow rate	l/min	53.2
<b>Hydraulic cycle times</b>		
Raise	seconds	4.7
Lower	seconds	4.3
Extend	seconds	2.5
Retract	seconds	1.8
Crowd	seconds	2.2
Dump	seconds	1.7

**AXLES**

Type		Standard
Make and model		ZF MT-L 3010 II (front), ZF MT-L 3010 II (rear)
Overall axle ratio		21.55:1
Chassis angle	degrees	+/-6

TM110 will only be offered with open differential with manual locking

**SERVICE FILL CAPACITIES**

Hydraulic system	litres	48
Fuel tank	litres	44
Engine oil including filter	litres	6
Axle oil (front)	litres	3.9
Axle oil (rear)	litres	4.6
Engine coolant system	litres	9

**ELECTRICAL OUTPUT**

System voltage	volts	12
Alternator output	Ah	85
Battery capacity	Ah	80

**EQUIPMENT****SERVICE AND MAINTENANCE**

Grease gun	+
Wheel nut wrench	•
Engine air pre-cleaner	+

**ELECTRICAL**

Worklights front, reverse light rear	•
LED worklights (loader arm mounted)	+
LED worklights (x2 front, x1 rear, x1 rear reverse light)	+
Road lights	•
Number plate bracket with light	•

**DRIVETRAIN**

20kph transmission, manual diff-lock	•
30kph transmission, manual diff-lock	+
Varispeed (hand inching)	+

**OPERATOR STATION**

Fully glazed cab	•
Canopy with front and rear screen (including wipers)	+
Left hand side gate	+
Heater (cab only)	•
12V in cab power socket	•
ROPS/FOPS safety structure	•
Interior light (cab only)	•
Front primary display dash	•
Two speed intermittent front windscreen wipe/wash and self-park (cab only)	•
Single speed rear windscreen wipe/wash and self-park (cab only)	•
Cup holder	•
Steering wheel spinner knob	•
Loader control isolator pin	•
Horn	•

**FRONT PRIMARY DISPLAY**

Warning lights	•
Direction indicators	•
High coolant temperature	•
Battery charging condition	•
Fuel gauge	•
Engine oil pressure	•
Hazard lamps	•
Park brake state	•
Road lights	•
Main beam lights	•
Engine pre-heat	•
Hi and low speed	•
Machine hours	•
Buzzer alerts	•
Operator presence	•

**HYDRAULIC SYSTEM**

Hydraulic quickhitch with in-cab isolation	•
Auxiliary hydraulic service	•
Indicator glass for hydraulic oil level	•
Hydraulic oil cooler	•

**EXTERNAL EQUIPMENT**

Front fenders	•
Rear fenders (with wide tyres)	•
Belly guard protection plate	•
Recovery hitch	•
Lifting / tie down lugs	•
Articulation joint safety strut	•
Rear tow hitch	+

**STANDARD** •  
**OPTIONAL** +









**ONE COMPANY, OVER 300 MACHINES.**

Your nearest JCB dealer

**Telescopic Wheel Loader | TMI10 AGRI**

Max engine power: 36kW (48hp)    Operating weight: 3,295kg    Lift capacity: 1,100kg    Lift Height: 3.5m

JCB Sales Limited, Rokester, Staffordshire, United Kingdom ST14 5JP.

Tel: +44 (0)1889 590312    Email: [salesinfo@jcb.com](mailto:salesinfo@jcb.com)

Download the very latest information on this product range at: [www.jcb.com](http://www.jcb.com)

©2025 JCB Sales. All rights reserved. No part of this publication may be reproduced, stored in a retrieval system, or transmitted in any form or by any other means, electronic, mechanical, photocopying or otherwise, without prior permission from JCB Sales. All references in this publication to operating weights, sizes, capacities and other performance measurements are provided for guidance only and may vary dependant upon the exact specification of machine. They should not therefore be relied upon in relation to suitability for a particular application. Guidance and advice should always be sought from your JCB Dealer. JCB reserves the right to change specifications without notice. Illustrations and specifications shown may include optional equipment and accessories. The JCB logo is a registered trademark of J C Bamford Excavators Ltd.

